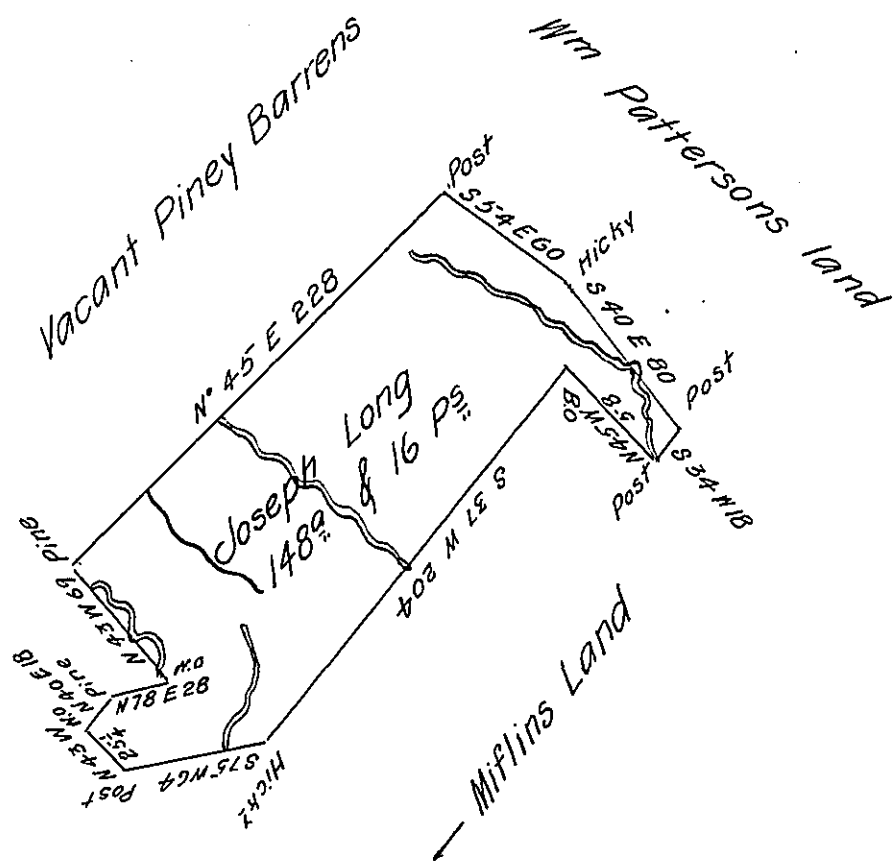


N.B. this tract was Returned before 151 acres but Interfered with Mr Miflins land this is to be received in place of the other



A Draught of a tract of land situate on the Waters of the Standing Stone Creek in the County of Bedford. Adjoining Land of Patterson and Miflin. Containing one hundred and forty eight acres and sixteen perches with the usual allowance of six Pr Cent for Roads &c. Resurveyed for Josep Long the 16<sup>th</sup> day of June 1787 In pursuance of a Warrant dated November 2<sup>d</sup> 1784.

George Wood D.S.

To John Lukens Esq<sup>r</sup> S. G.

IN TESTIMONY that the above is a copy of the original remaining on file in the Department of Internal Affairs of Pennsylvania, made conformably to an Act of Assembly approved the 16th day of February, 1833, I have hereunto set my Hand and caused the Seal of said Department to be affixed at Harrisburg, this third day of October 1905.

*Isaac R. Brown*  
Secretary of Internal Affairs.